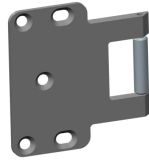


**PART NO. 2890-601**  
**#1 STRIKE**

Morticed strike plate for use with in-swinging doors.



**PART NO. 2890-602**  
**#2 STRIKE**

For use with most out-swinging doors.



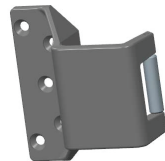
**PART NO. 2890-603**  
**#3 STRIKE**

Inside frame mounted strike plate for in-swinging doors.



**PART NO. 2890-609**  
**#9 STRIKE**

For use with many double-doors. Note max clearance dimensions when used with sound seal or astragal.



A=1.25"  
B=1.5"

**PART NO. 2890-610**  
**INTERIOR HANDLE**

Replaces original handle. Black & stainless steel finish.



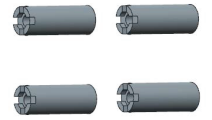
**PART NO. 2890-612**  
**EXTERIOR HANDLE**

Replaces exterior handle. Included clutch mechanism. Black & stainless steel finish.



**PART NO. 2890-614**  
**PART NO. 2890-615**  
**THICK DOOR SPACERS**

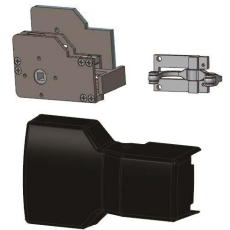
These spacer sets allow installation on doors thicker than standard 2" doors.



2890-614 = 2" - 2-3/4"  
2890-615 = 2-3/4" - 3-1/2"

**PART NO. 2890-620**  
**PANIC BAR INSTALL KIT**

To add a panic bar to an existing S&G 2890B you will need the parts contained in this kit in addition to the panic bar sold separately.



**PART NO. 2890-621**  
**3' PANIC BAR**

Replace or add a panic exit device.



OVERALL LENGTH = 31 3/4"  
PAD LENGTH = 24"

**PART NO. 2890-622**  
**4' PANIC BAR**

Replace or add a panic exit device.

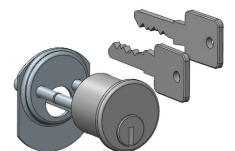


OVERALL LENGTH = 35 1/2"  
PAD LENGTH = 24"

**PART NO. 2890-623**  
**MEDECO RIM CYLINDER**

**PART NO. 2890-624**  
**RIM CYLINDER**

Can be used as mechanical access control or key override for electronic access control. Comes with unrestricted interchangeable core.

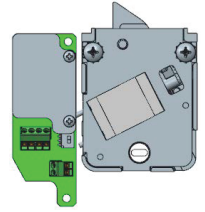


**PART NO. 2890-625  
PANIC MECHANISM  
BLACK COVER**



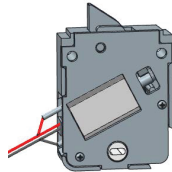
**PART NO. 2890-636  
ELECTRONIC ACCESS  
CONTROL RETROFIT KIT**

Kit includes all parts necessary to add electronic access function to S&G 2890B systems originally supplied without it.



**PART NO. 2890-626  
ELECTRONIC CONTROL  
MODULE**

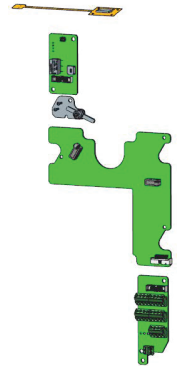
Replacement assembly.



**PART NO. 2890-640  
ALARM KIT**

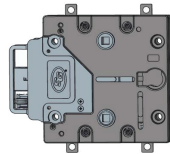
**PART NO. 2890-641  
ALARM KIT WITH DIAL  
ROTATION DETECTION**

Kits include all sensors, cables, and mounting hardware to monitor various lock states.



**PART NO. 2890-628  
MECHANICAL ASSEMBLY**

Replacement assembly. Also referred to as center module and lock extension.



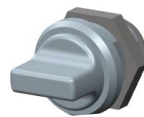
**PART NO. 2890-627  
KEYED CAM LOCK**

Replaces original cam locks. Comes with 2 keys. Keyed same as original lock.



**PART NO. 2890-629  
KEYLESS CAM LOCK  
(THUMBTURN)**

Replaces original cam locks. Keyed same as original lock.



**PART NO. 2890-632  
NARROW EXTERIOR  
TRIM PLATE**

Direct replacement for original mounting plate and stainless escutcheon. For use where wider escutcheon interferes with sound seals.

